



Nagel Assisted Living

Where You Love To Call Home

232 South Elm Street • Waconia, MN 55387

PHONE: 763.267.6658

FAX: 763.231.9327

OUR PHILOSOPHY

Life Should Be Shared in a Community.

We founded **Nagel Assisted Living & Memory Care** with one goal in mind: to create a community that encourages closer connections, fosters stronger relationships, and promotes a more vibrant way of life for each of our residents.

As a proud member of the **Sunflower Communities** family of assisted living & memory care communities, we believe:

- **Shared Spaces Promote Safer Living** – Our community is designed for resident safety, increased interpersonal interaction, and daily engagement. Companion and triple occupancy bedroom options are available to those who would prefer the company of other individuals. Our single occupant community bathrooms offer an opportunity for community oversight and provide enhanced safety for each of our residents.
- **Community Dining Options Promote Connections** – We believe relationships are built and deepened when we break bread together. Enjoying home-style meals and great conversation in our common dining rooms is fundamental to our health as a community.
- **Community Activities Promote Relationships** – Our residents have the opportunity to be active members of our community on a daily basis. From bingo to on-site spiritual services, our aim is to provide a variety of engaging and interactive community programs to ensure our residents stay as active as they prefer each day.

As you tour, you'll discover the difference our Community Living Philosophy makes in the lives of our residents and our community as a whole.





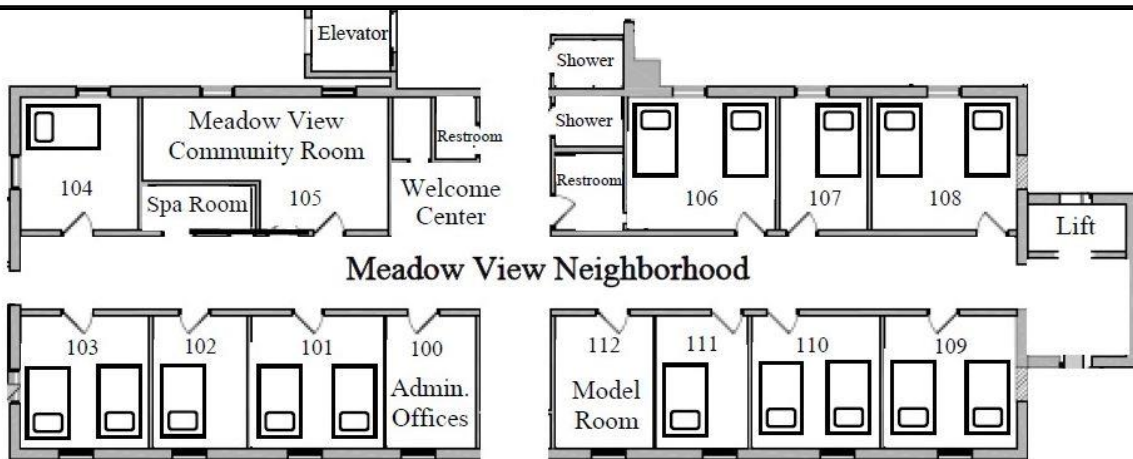
FLOOR PLANS

Your Neighborhood within Our Community.

Our Nagel Assisted Living & Memory Care Community is separated into two levels and three neighborhoods. Each neighborhood is named after a place where sunflowers grow.

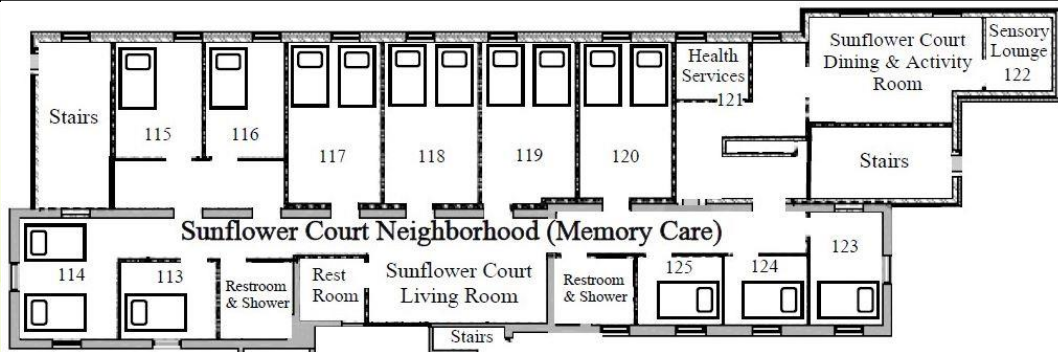
MEADOW VIEW NEIGHBORHOOD – Upper Level

- Main Entrance
- Welcome Center
- Model Apartment
- Admin. Offices
- 4 Single Bedrooms
- 6 Companion Bedrooms
- Community Room
- Lift
- Spa Room w/ Soaking Tub
- 3 Shared Restrooms
- 2 Shower Rooms
- Elevator



SUNFLOWER COURT NEIGHBORHOOD – Upper Level (Memory Care)

- Healthcare Services
- Sensory Lounge
- 6 Single Bedrooms
- 5 Companion Bedrooms
- Dining & Activity Room
- 3 Restrooms & 2 Showers



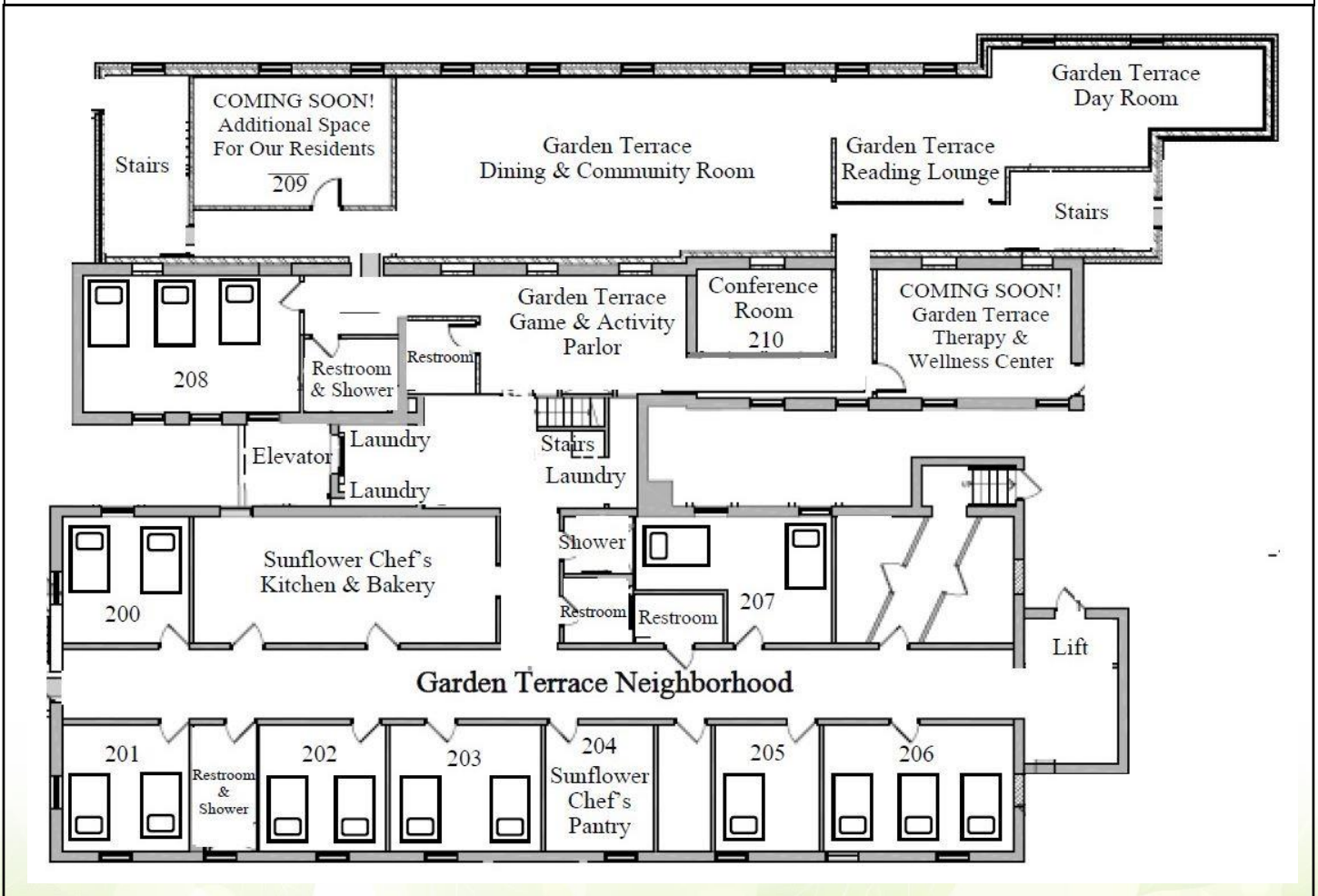


FLOOR PLANS

Your Neighborhood within Our Community.

GARDEN TERRACE NEIGHBORHOOD – Lower Level

- Dining & Community Room
- Reading Lounge
- Day Room
- Laundry
- Physical Therapy & Wellness Center
- Game & Activity Parlor
- Kitchen
- Chef's Pantry
- Conference Room
- 1 Single Room
- 5 Companion Rooms
- 3 Triple Rooms
- 5 Restrooms & 3 Showers



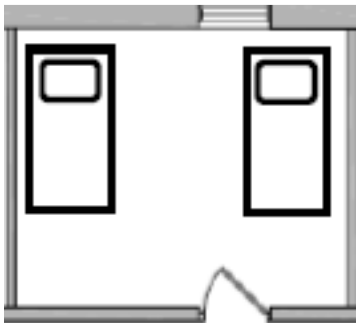
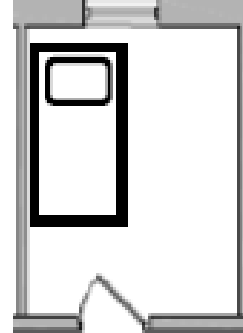


ROOM OPTIONS

Choose a Space that Works for You.

Single Occupancy Rooms

Our single occupancy spaces are designed for one person and allow enough room for a twin bed, nightstand with lamp, a sitting area, and a closet for clothing and personal items.



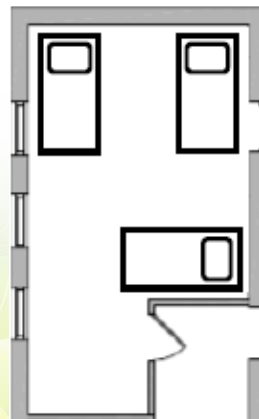
Companion Rooms

These living spaces provide a great option for residents who prefer to live with another community member or married couples. They are designed to allow enough room for two twin beds, two nightstands with lamps, sitting area, and clothing closet.



Triple Occupancy Rooms

Our largest rooms are our triple models designed for three residents to live comfortably within one space. These living arrangements allow enough room for three twin beds, three nightstands with lamps, a sitting area, and a closet for clothing and personal items.





Nagel Assisted Living

Where You Love To Call Home

232 South Elm Street • Waconia, MN 55387

PHONE: 763.267.6658

FAX: 763.231.9327

RENTAL OPTIONS

Monthly Rental Options

- Single Occupancy
- Double Occupancy (Companion Room)
- Triple Occupancy

Your monthly rental includes:

- Private or semi-private bedroom
- Shared baths with towels provided
- All utilities except telephone
- Television in your room with cable
- Wi-Fi / internet
- Shared community spaces & dining rooms
- Three meals served daily (includes a self-serve continental breakfast)
- Daily snacks, coffee & community refrigerator for your use
- Daily leisure activities & educational programming
- Weekly Light Housekeeping
- Weekly Laundry (up to 3 loads)
- 24 hour on-site staff
- Use of on-site emergency call system
- Personal mail delivery
- 1 group transportation trip per week

Customized Levels of Care

Along with monthly rent, **each resident will also be assigned a customized level of care - from Enhanced Assisted Living Care to Ultimate Memory Care.** Because we're focused on serving high-needs assisted living and memory care residents, these care levels provide the value families are looking for paired with the care that residents need. These convenient care levels allow residents, their families, and case managers to:

- **Provide increased care as needed** with designated assistance provided
- **Seamlessly transition from Assisted Living to Memory Care** should this be necessary

The care level for each of our residents is determined by a complete assessment of their level of need by our nurse.

January 2017. *All service offerings subject to change.*





CARE LEVELS

Our Nagel Community provides senior care services for all residents from **basic assisted living care needs** to **advanced memory care**. The care level for each of our residents is determined by a complete assessment of their level of need by one of our care team professionals. **Choose your appropriate level of care:**

- **Level 1: BASIC**
 - Care Attendant Visits (up to **40 hours** per month)
 - Medication Set-Up & Administration (through Level 3)
 - Blood Pressure Checks (up to 1 per day)
 - Weights (up to 1 per day)
 - Daily Wellness Checks
 - Monthly Routine Footcare
 - Assistance Accessing Community Resources (up to 5 hours per month)

- **Level 2: MODERATE**
 - **All of the above, plus...**
 - Care Attendant Visits (up to **15 additional hours** per month / **55 Total hours** per month)
 - **Secured Memory Care Environment** – which includes:
 - Supportive 24 hour supervision within the secured unit
 - Daily guidance, functional and social cueing
 - Meaningful and varied daily activities (both planned and unplanned)
 - Regularly scheduled group therapeutic activities (music therapy, reminiscence groups, therapeutic arts)
 - Daily exercise—movement with meaning
 - Workshops/family gatherings

- **Level 3: ENHANCED**
 - **All of the above, plus...**
 - Care Attendant Visits (up to **15 additional hours** per month – **70 Total hours** per month)
 - Assistance with walking and transferring
 - Help with eating
 - Extensive, appropriate support with social cueing
 - Frequent redirection/interventions to reduce risk of elopement and/or inappropriate behaviors
 - Occasional two-person assist with transfers

- **Level 4: ULTIMATE**
 - **All of the above, plus...**
 - Care Attendant Visits (up to **15 additional hours** per month – **85 Total hours** per month)
 - Two persons transfers with care
 - Wheelchair assistance
 - Incontinence assistance (total)
 - Physical assistance/support with eating
 - Daily one-to-one interactions
 - Hourly checks for security and safety
 - Special needs (may include coordination of care with outside agencies)
 - Range of motion (daily)
 - Repositioning during the day or hours of sleep

January 2017. *All service offerings subject to change.*



ADDITIONAL SERVICES

Care Attendant, Nursing & Therapy Visits:

- Care Attendant Visits
- RN/LPN Visits
- Physical, Occupational, or Speech Therapy

Medication Management & Administration:

- Medication Set-Up
- Medication Administration – Level 1
- Medication Administration – Level 2
- Medication Administration – Level 3
- Blood Glucose Check
- Insulin / Other Injections (not including B12)
- B12 Injection

Medical Care Services:

- Blood Pressure Checks
- Weights
- Routine Foot Care
- Wellness Check
- Wound Care
- Oxygen Management
- Nebulizer Treatments
- Catheter Care
- Colostomy Care
- Urine Specimen Collection

Other Services:

- Laundry Service (wash, dry, fold, deliver)
- Housekeeping
- Assistance accessing community resources
- Assistance with bills & finances
- In-Room Mini Refrigerator Purchase
- Guest Room Rental (*Based On Availability*)
- Transportation Service
- Foot or Chair Massage

Food Services:

- Meal Delivery to Room
- Guest Meals

January 2017. *All service offerings subject to change.*

